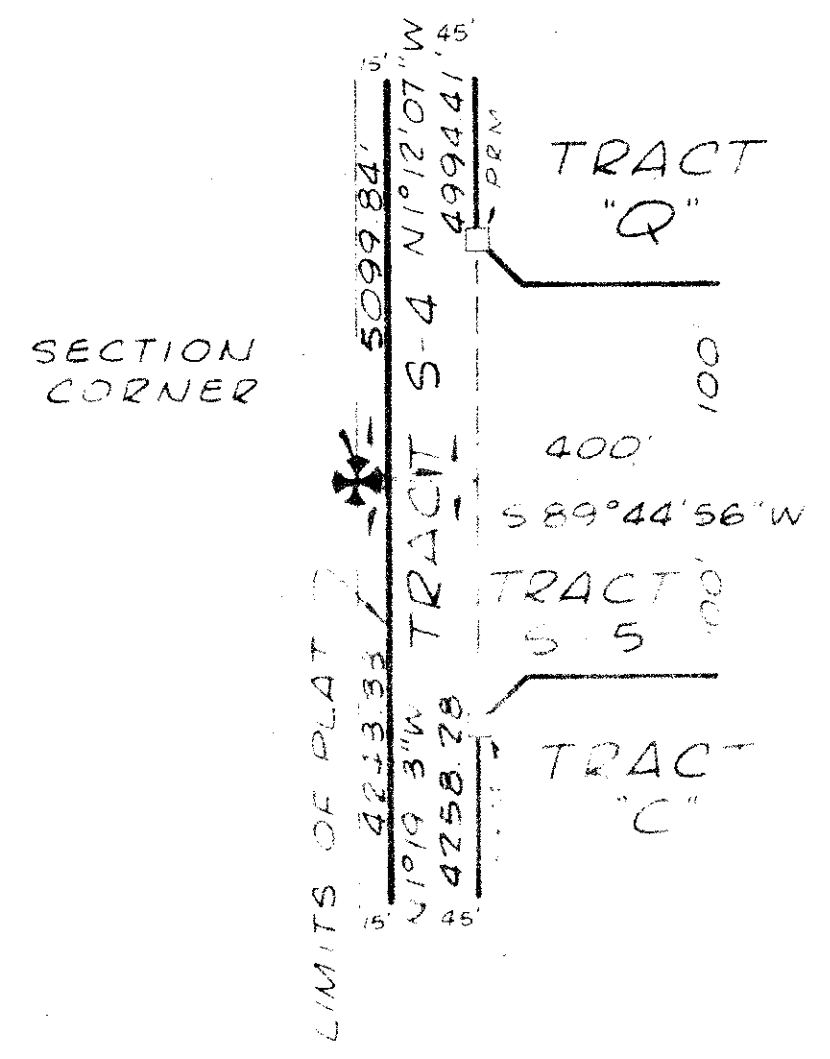
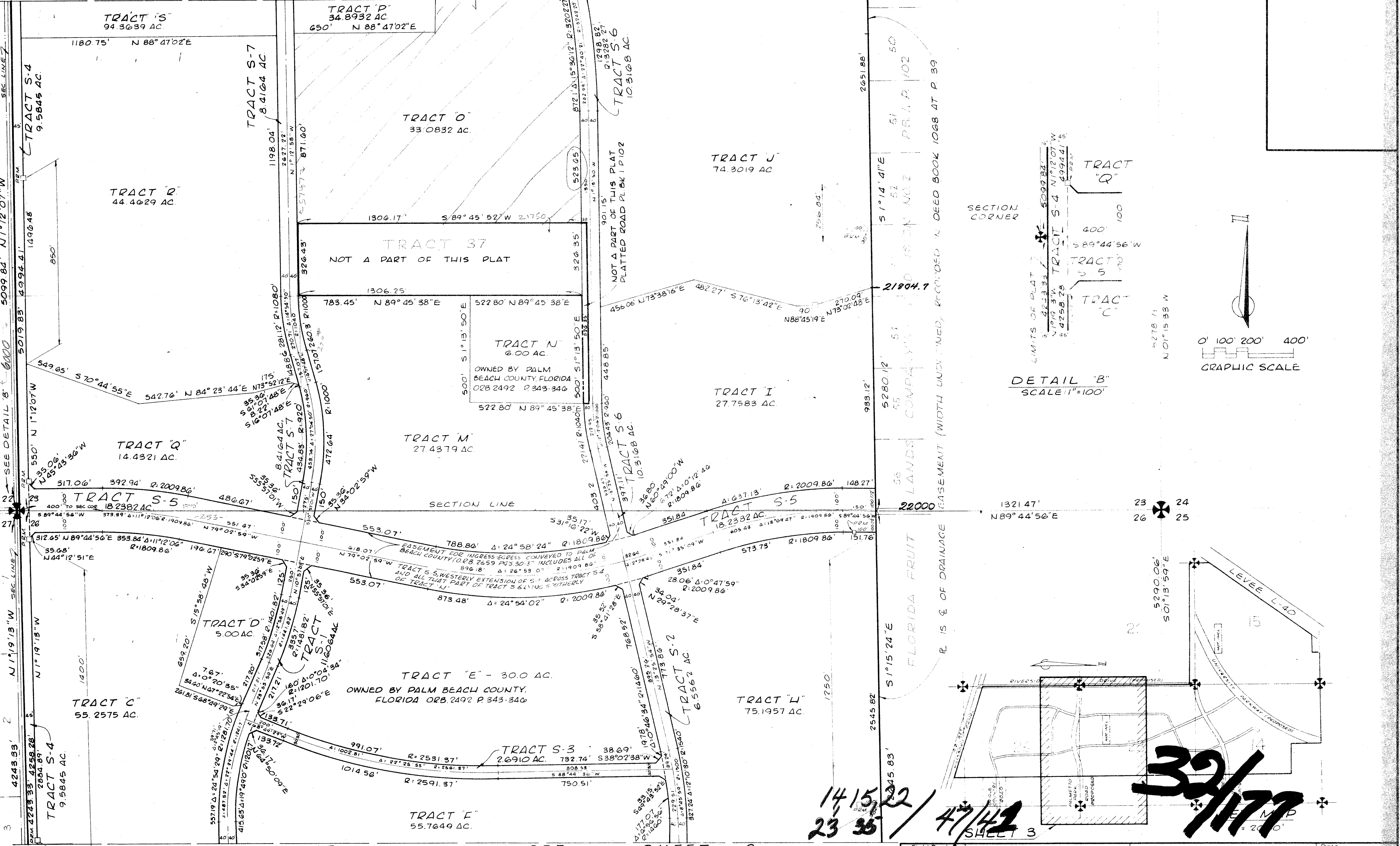


BOUNDARY PLAT OF ORIOLE COUNTRY

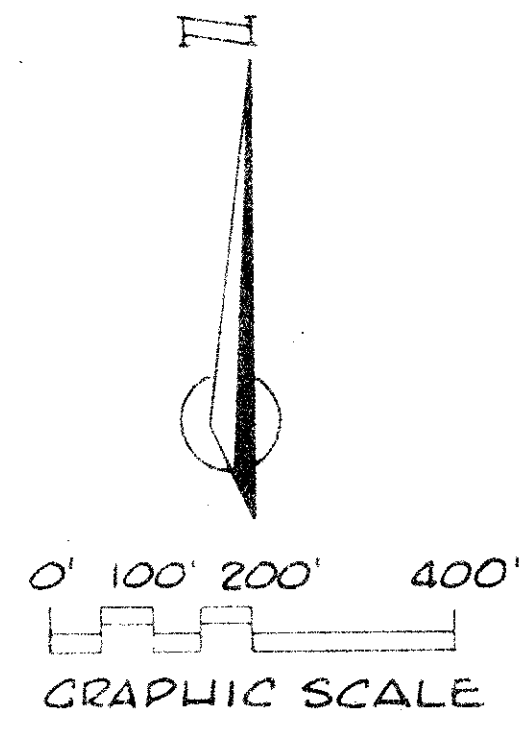
177

A PLANNED UNIT DEVELOPMENT

MATCH LINE SEE SHEET 4



DETAIL "B"
SCALE: 1"=100'



141522 / 2335 / 47/42

32/177

MATCH LINE SEE SHEET 2

ORIOLE COUNTRY

Field Book No. O-22 Pg. 46 Design D. WHITE Drawn G. COSS Checked M.C. HEHN Cred H. BLINN	ROBERT E. OWEN & ASSOCIATES, INC. ENGINEERS · PLANNERS · SURVEYORS WEST PALM BEACH FLORIDA	BOUNDARY PLAT <u>OF</u> ORIOLE COUNTRY	Date Scale 1" = 200' Sheet 3 of 6 File No. BF-2250
---	--	--	--